



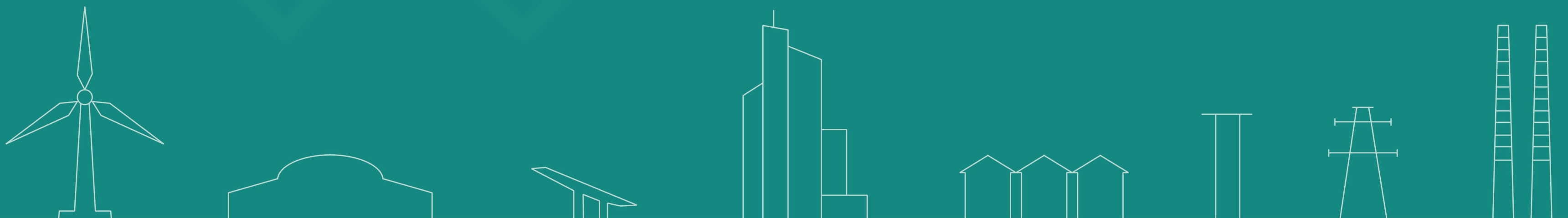
macroworks

LVIA PHOTOMONTAGES

Fosterstown Distribution Station , Trim, Co. Meath

This book contains imagery for the viewpoints chosen for the LVIA study

May 2024



LVIA | TVIA | Landscape Design | Visibility Analysis | Glint and Glare | Verified Photomontages | CGI | Shadow Flicker Analysis

INDEX

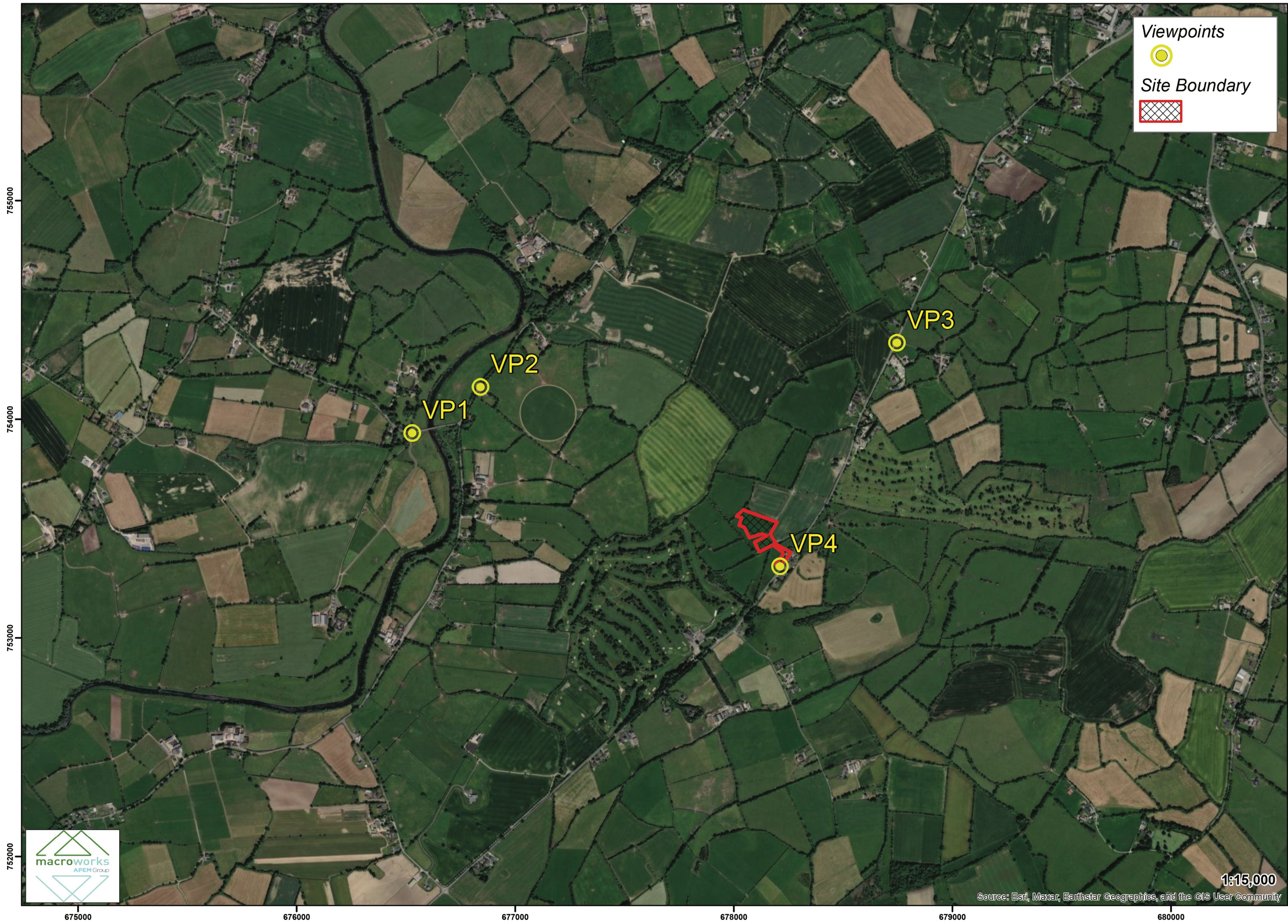
Viewpoint 1 - Existing View + Outline View
NB - There is no Montage, View for this viewpoint

Viewpoint 2 - Existing View + Outline View
NB - There is no Montage, View for this viewpoint

Viewpoint 3 - Existing View + Outline View
NB - There is no Montage, View for this viewpoint

Viewpoint 4 - Existing View + Outline View
Viewpoint 4 - Montage View

Viewpoint locations selected for the Forterstown Distribution Station project



Existing View



Outline View
indicating physical position and scale of the
proposed development irrespective of screening



These are 80° panoramic montages captured and Reference has been made to Land-
scape Institute TGN 06/19 - Visual Representation of development proposals.

To view these panoramas on a flat surface one must move from left to right along its
length whilst maintaining a perpendicular viewing direction and the specified
correct viewing distance of 30cm. To see this entire panoramic scene in reality
would necessitate turning one's head through 40°.

Easting (ITM):	676528	Lens:	50mm / Full Frame Sensor	Date:	15/05/2024
Northing (ITM):	753936	Camera:	Canon 1-D Mark II digital SLR	Time:	09:42
Direction of View	100° E of Grid North	Camera Height:	1.7m Above Ground Level		
Angle of View:	80°				





These are 80° panoramic montages captured and Reference has been made to Land-
scape Institute TGN 06/19 - Visual Representation of development proposals.

To view these panoramas on a flat surface one must move from left to right along its
length whilst maintaining a perpendicular viewing direction and the specified
correct viewing distance of 30cm. To see this entire panoramic scene in reality
would necessitate turning one's head through 40°.

Easting (ITM):	676841	Lens:	50mm / Full Frame Sensor	Date:	15/05/2024
Northing (ITM):	754147	Camera:	Canon 1-D Mark II digital SLR	Time:	09:53
Direction of View	120°SE of Grid North	Camera Height:	1.7m Above Ground Level		
Angle of View:	80°				

